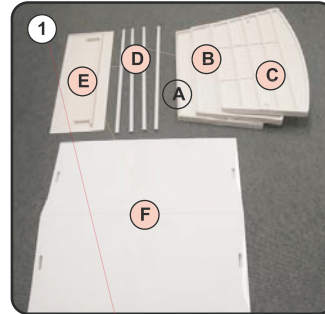


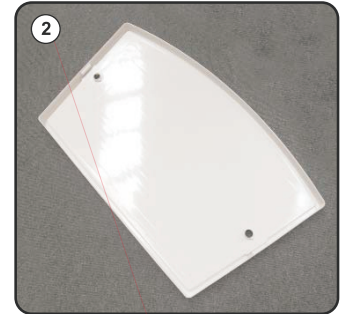
Laura CP-85

Promotional Counter

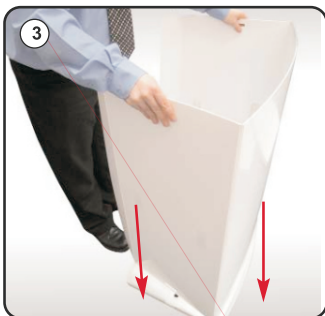
Assembly Manual



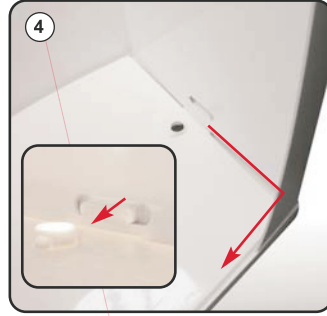
Kit includes: 1 x top (A), 1 x base (B), 1 x internal shelf (C), 4 x poles (D), 1 x header (E), 1 x wrap (F)



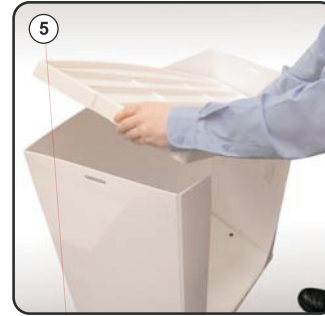
Take one of the two identical moulded top/base (A/B) units and place on floor raw edge facing upwards.



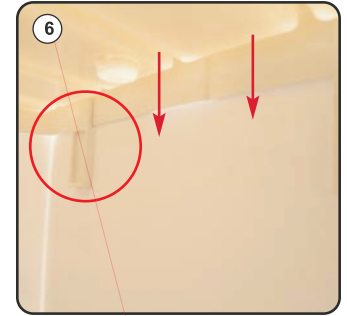
Unfold wrap (F) and slot into the base with opening on the shorter edge of the base.



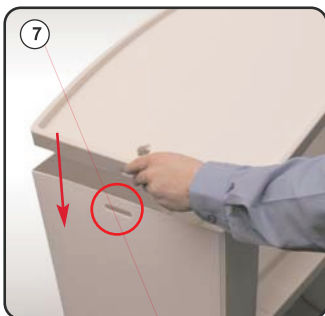
Slot the wrap securely into base ensuring the pips on either side of the base push through the hole in either side of the wrap.



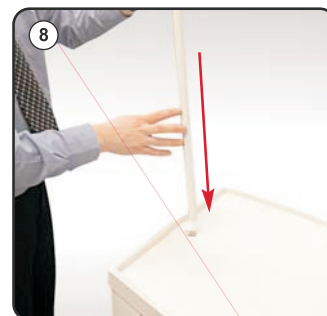
Take the shelf (C) and slide down through the top of the wrap.



The shelf should slot in tightly into the grooves on the inside of the wrap.



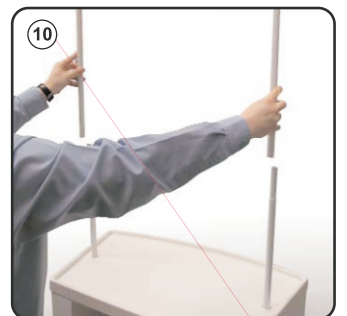
Take the 2nd moulded top/base (A/B) and slot over wrap, again ensuring pips push through wrap



Slot one male pole (D) through hole in top of unit, ensuring male end is to the outside.



Create header assembly by slotting two poles into the header. (male ends into header)



Finally attach the the header assembly to the main unit.